



Year 6 Spring 1 Topic Web

6S - Miss Saiyed

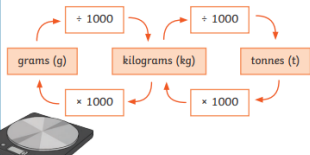
6W - Ms Wallis

Maths

This half term, we will be learning about measurement including area, perimeter and volume.

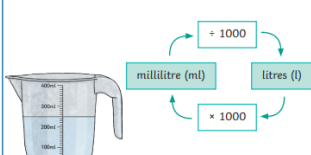
Converting Mass

1 tonne = 1000kg	$\frac{1}{4}$ kg = 0.25kg = 250g
1000g = 1kg	$\frac{1}{2}$ kg = 0.5kg = 500g
$\frac{1}{10}$ kg = 0.1kg = 100g	$\frac{3}{4}$ kg = 0.75 = 750g



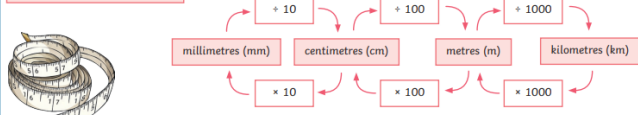
Converting Capacity

1000ml = 1l	$\frac{1}{2}$ l = 0.5l = 500ml
$\frac{1}{10}$ l = 0.1l = 100ml	$\frac{3}{4}$ l = 0.75l = 750ml
$\frac{1}{4}$ l = 0.25l = 250ml	$\frac{1}{100}$ l = 0.01l = 10ml



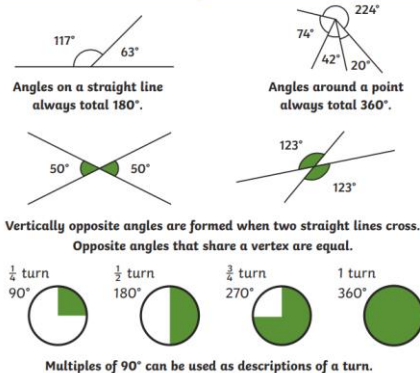
Converting Length

1000m = 1km	$\frac{1}{2}$ m = 0.5m = 50cm	$\frac{3}{4}$ m = 0.75m = 75cm
100cm = 1m	$\frac{3}{4}$ m = 0.25m = 25cm	$\frac{1}{10}$ m = 0.1m = 10cm
10mm = 1cm		

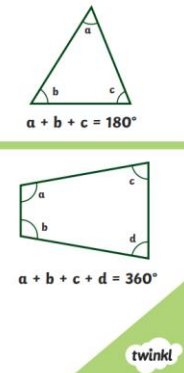


We will also be learning about statistics and the properties of 2D and 3D shapes.

Calculating Angles

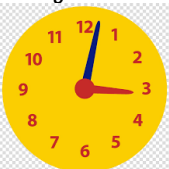


Angles in a Triangle



In arithmetic lessons, we will continue to focus on ensuring all learners are secure in the four operations, including long multiplication and division, and can recall their times tables. We will also encourage learners to be able to recall prime, squared and cubed numbers.

Your child also needs to be able to tell the time using an analogue clock.



English

This half term we will be using a new writing scheme called Ready Steady Write. We will be using the book 'On The Origin of the Species' by Sabrina Radeva, which will link to the science unit we have been studying on evolution and inheritance.

Over the course of the half term we will be writing a narrative and an explanation text.

Grammar

Word

- The difference between vocabulary for formal and informal speech
- Synonyms and antonyms

Sentence

- Expanded noun phrases
- Subjunctive forms in formal writing and speech

Text

- Cohesive devices – adverbials
- Headings and subheadings to organise information

Punctuation

- Using colons, semi-colons and dashes to mark the boundary between independent clauses
- Use brackets to indicate parenthesis

Reading

This half term we will be continuing with our new reading scheme: Ready Steady Read Together.

We will be looking at the following texts:

- The House with Chicken Legs (F)
- Women in Science (NF)
- When the Sky Falls (F)
- The Final Year (P)
- Darwin's Dragons (F)

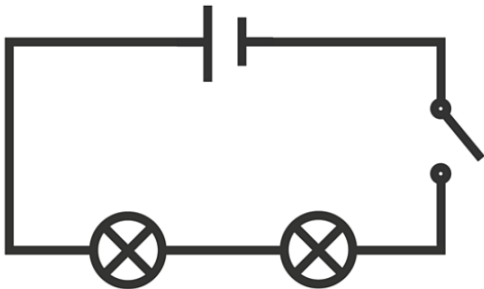
Please encourage your child to recall the vocabulary they have learnt in school each day.

Science

This half term, we will be learning about electricity

Golden Knowledge (everyone must know and be able to explain this information)

- The brightness of a lamp or the volume of a buzzer is associated with the number and voltage of cells used in the circuit.
- To recognise symbols used in a simple circuit diagram.



Your child will bring home a knowledge organiser to share the learning that will be taking place this half term.

Geography

This half term we will be continuing our learning about North and South America.

Golden Knowledge (everyone must know and be able to explain this information)

- There are 4 main climate zones: tropical, cold, dry and temperate.
- A biome is an area of the planet with a similar climate and landscape where similar animals and plants live.
- The biomes of North America are tundra, temperate deciduous forest, grasslands, desert and tropical rainforest.
- The biomes of South America are tropical rainforest, savannah, grassland, desert and temperate deciduous forest.

PE

This half term we will be learning about football and dance.

PE days

6S – Tuesday and Thursday

6W – Tuesday and Friday

Learners should come to school in PE kit, which must be plain black jogging bottoms or leggings and a plain white t-shirt. No jewellery, including earrings and watches, can be worn for PE and if possible should be left at home on PE days. If girls wish to keep their headscarf on, it must be a tight fitting sport specific scarf for safety reasons.

RE

This half term we will be learning about what Christians believe about the old and new covenants.

We will be answering the questions:

What do we understand about the word 'covenant'?

Why is Abraham important to Christians?

What do Jews and Muslims believe about Abraham?

What do we know about Moses and why is he important to Christians and Jews?

What do the stories of Jesus' birth tell us about Christian beliefs?

Music

In music, learners will be learning about dynamics and pitch.

We will be answering the questions:

Why does the music paint a certain picture?

What do dynamics/pitch and texture mean in music?

What is the role of a conductor?

What effect does changing the dynamics/texture/pitch have?

What methods can be used to remember compositions?

Art

In art this half term, we will be creating mixed media to create a still life. Learners will experiment with different drawing techniques using graphite pencil and coloured pencil. They will practise using pencil to create textures and show form in drawings and paintings by shading and adding highlights to objects.

Computing

In computing learners will be introduced to the coding language python.

We will learn:

- About basic python commands.
- What nested loops are and how they can be used.
- Create, test and debug programs.

PSHE

In PSHE, we will be learning about how we can help our well-being.

We will be learning about:

- What we mean by mental health
- How we can reframe our thinking
- How we can seek health for our mental health

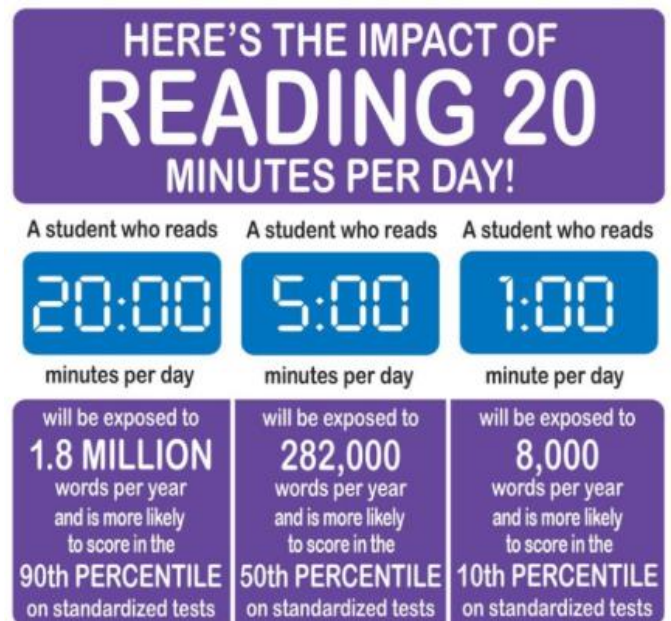
We will also mark the following special events:

Children's Mental Health Week, which will take place from 9th to 15th February and we will be exploring this year's theme 'This is My Place'.

Internet Safety Day, which will take place on 10th February and this year will focus on AI (artificial intelligence)

Homework

As a reminder, we expect learners to read at home for at least 10 minutes per day. Parents/carers should sign learners' reading records at least once a week.



Learners are also expected to learn and practise their weekly spellings.

They are also expected to complete at least 15 minutes per week on Times Tables Rock Stars, although we would like every learner to aim for 5 minutes per day.

SATs

Key Stage Assessments will take place from Monday 11 May to Thursday 14 May 2026.

After school revision classes will continue this half term. Monday is maths and Wednesday is reading and grammar.

We will be holding a parents' meeting at the end of this half term to give you more information about how you can help your child prepare for these assessments.

Resources to support your child in preparing for SATs can be found on the school website via the following links:



<https://tinyurl.com/2s3jtp7s>